



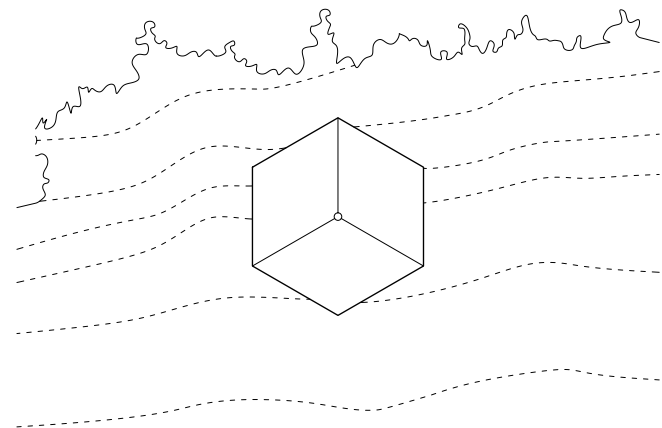
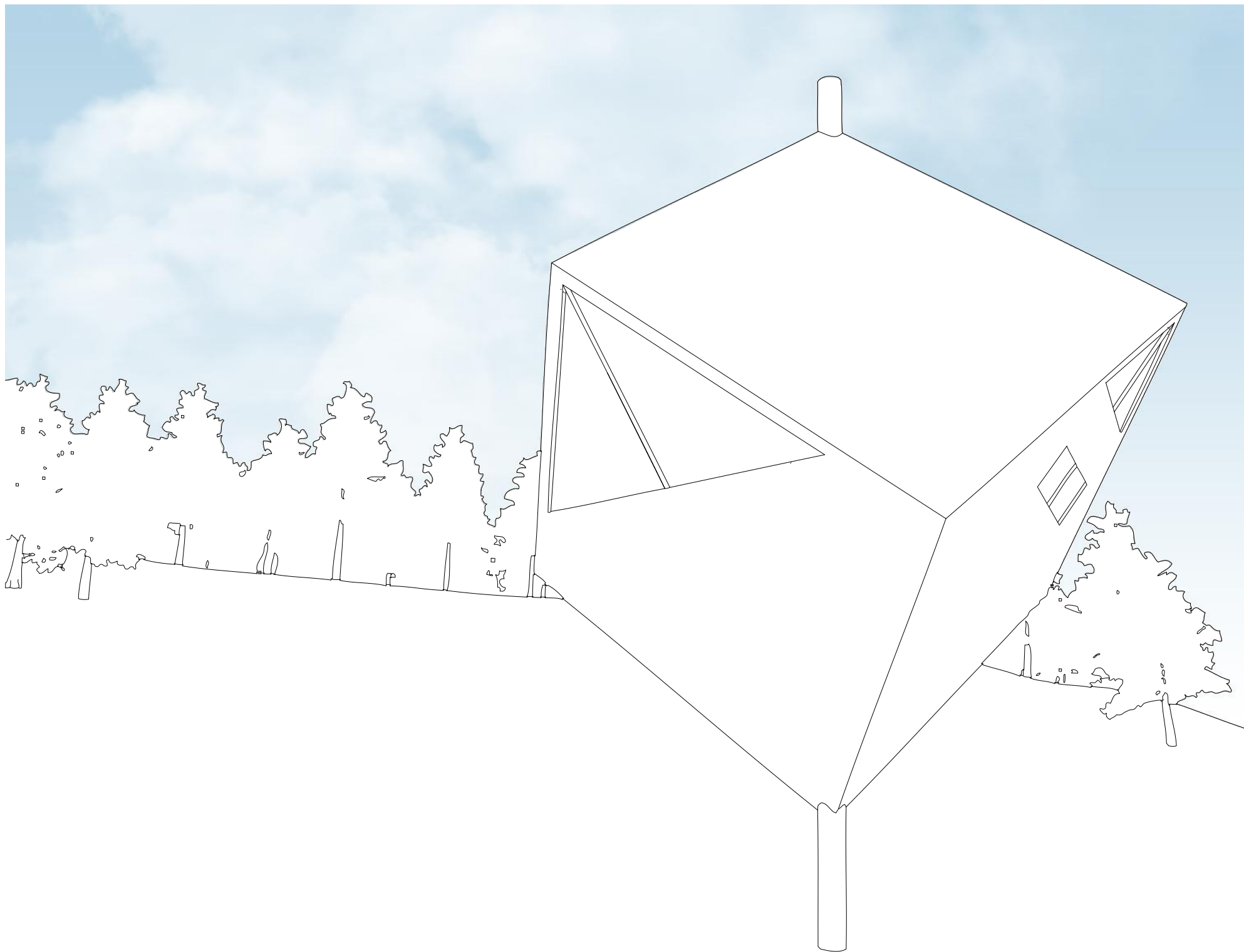
**description**  
a weekend  
house for two  
persons on a  
lonely location  
in the hills

**program**  
residential

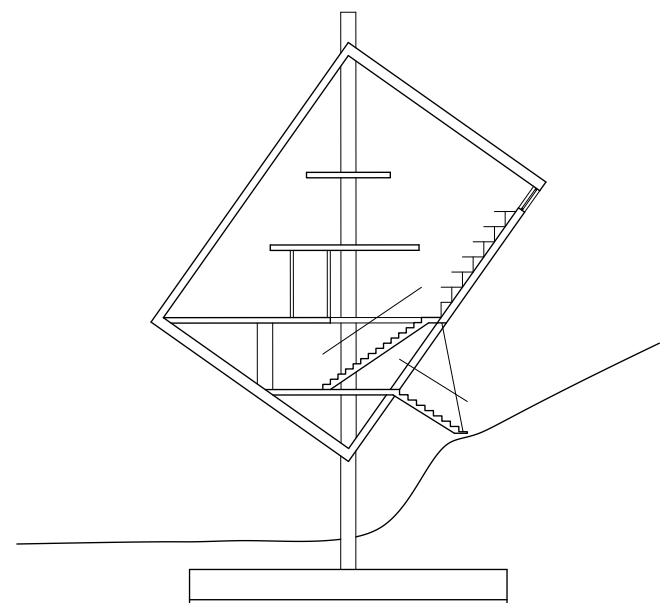
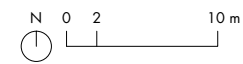
**location**  
josipdol,  
slovenia

**year**  
2006

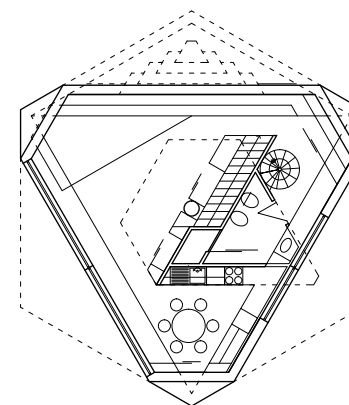
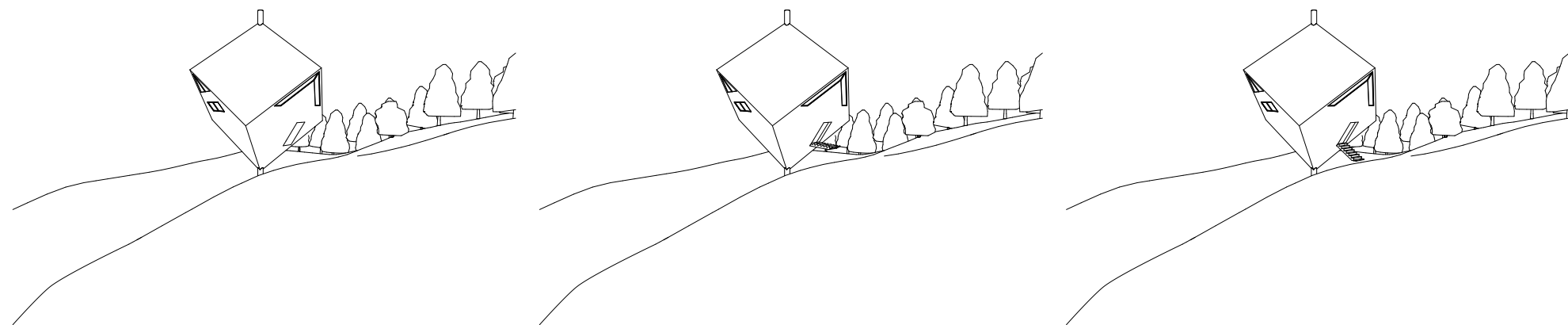
**mentor**  
prof. mario  
perossa



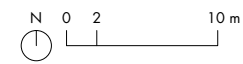
site plan S 1:500



section S 1:250



floor plan S 1:250



GRUBAR  
P A V I  
L I O N

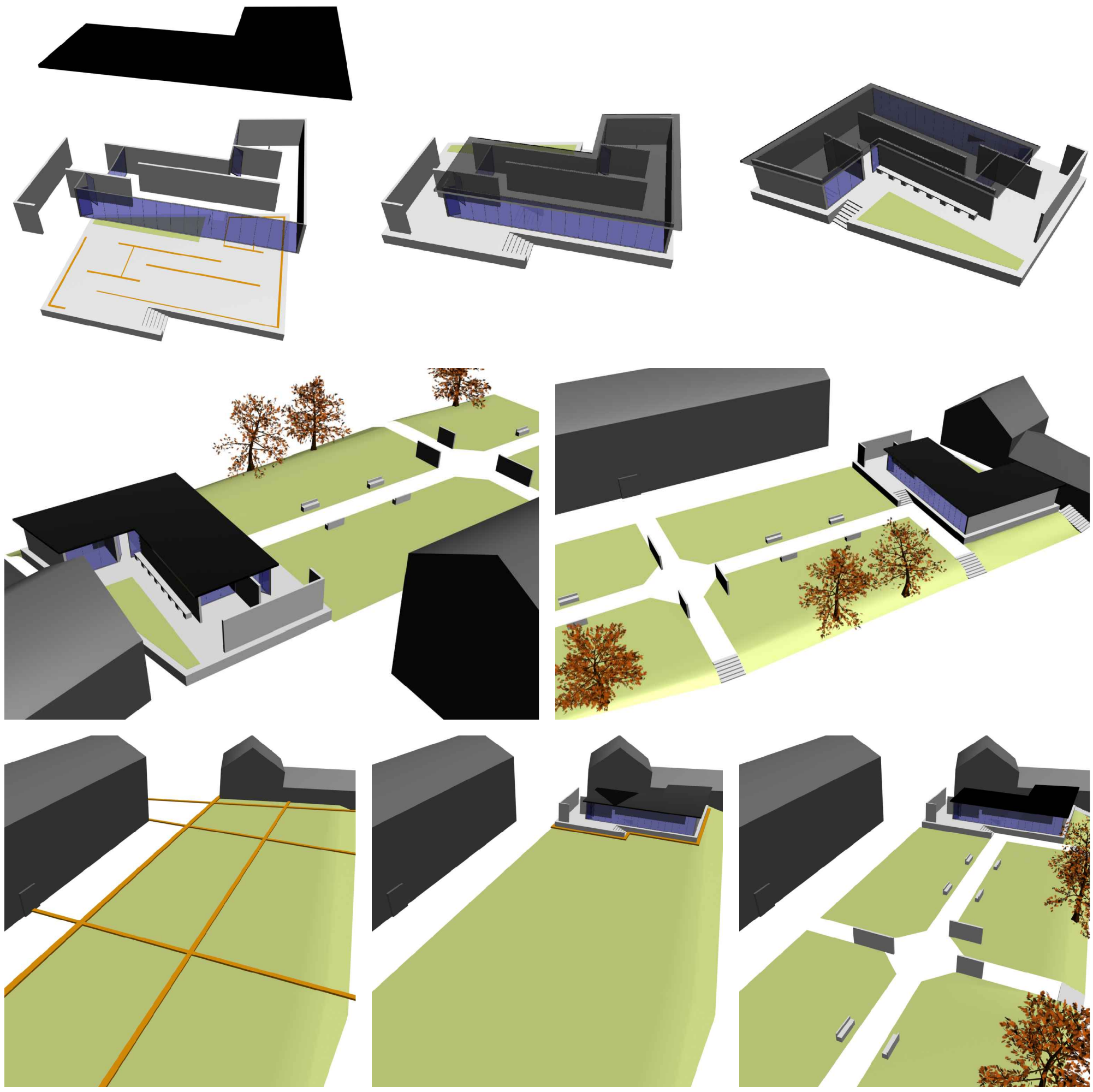
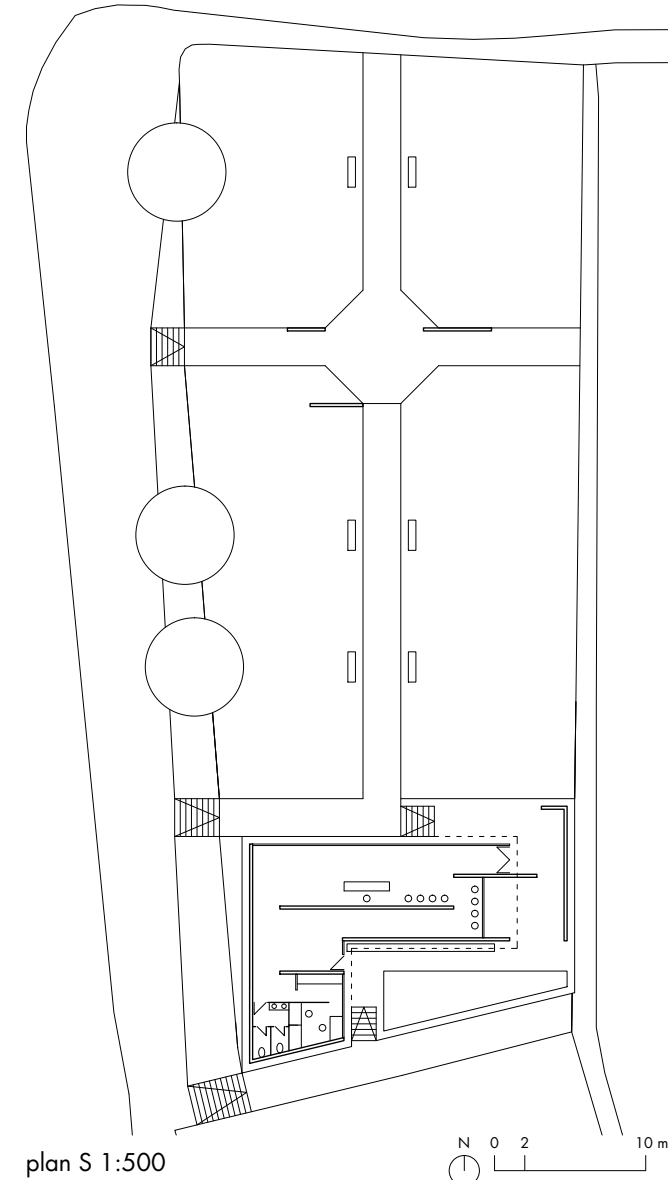
description  
exhibition  
pavilion in a  
park in  
ljubljana

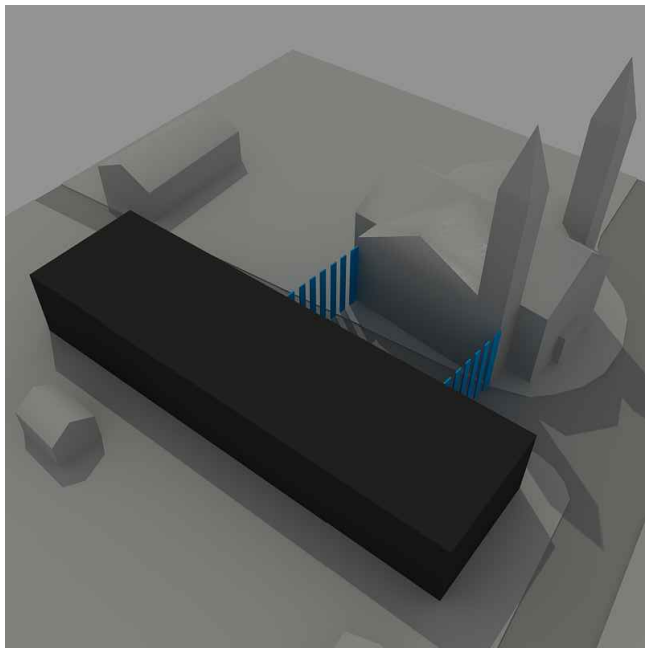
program  
exhibition

location  
in front of  
grubar palace,  
ljubljana,  
slovenia

year  
2006

mentor  
prof. vojteh  
ravnikar





site plan S 1:4000

P O R T  
F O L I O

TRNOVO  
GALLERY

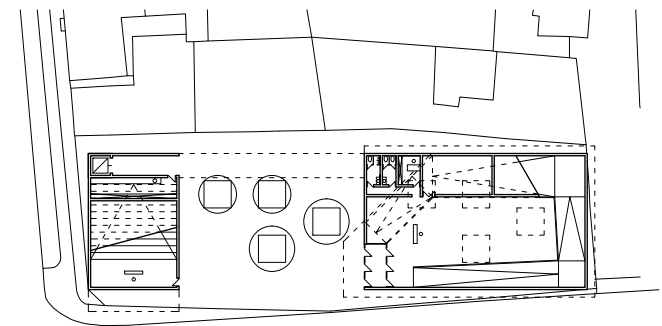
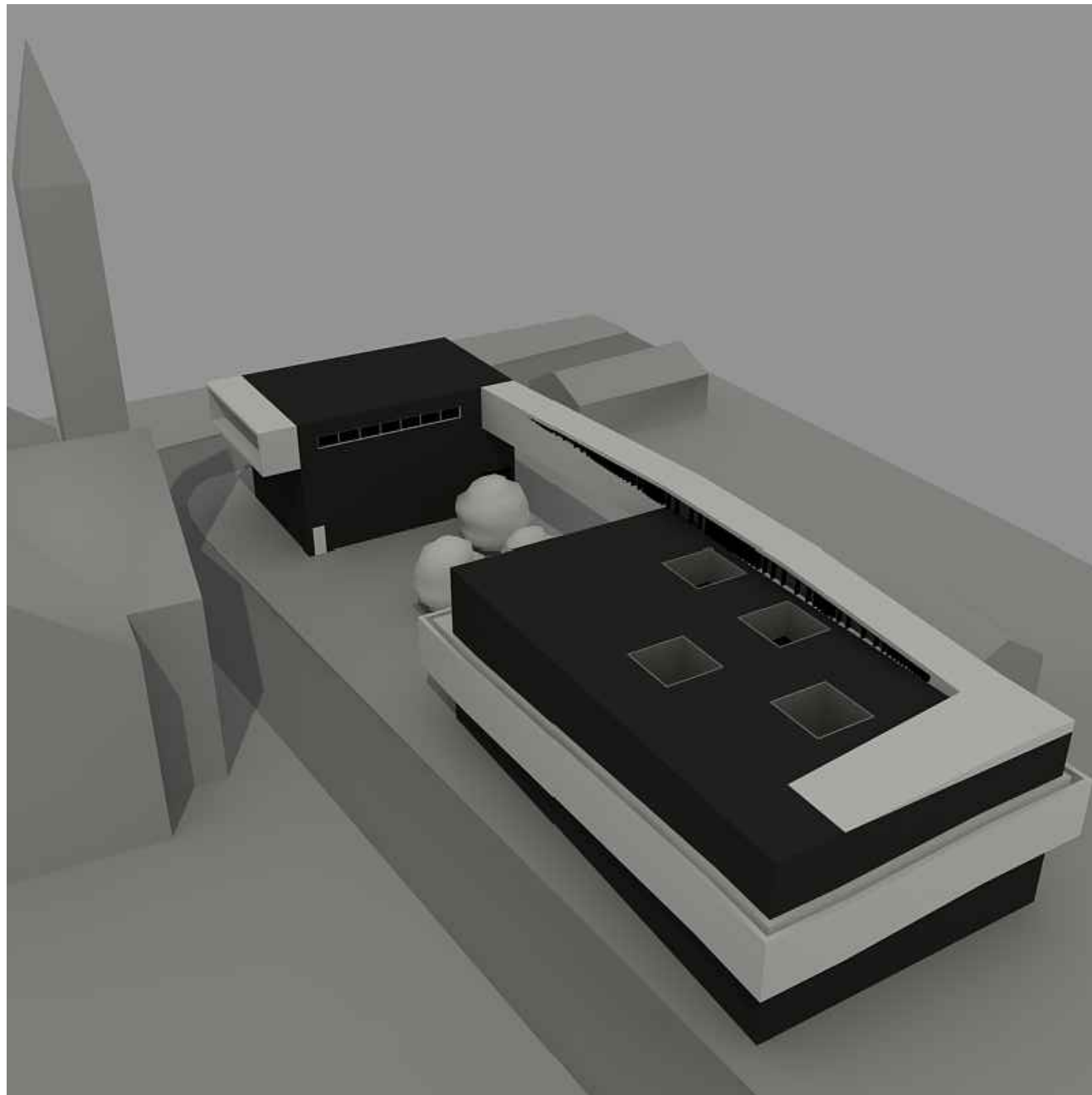
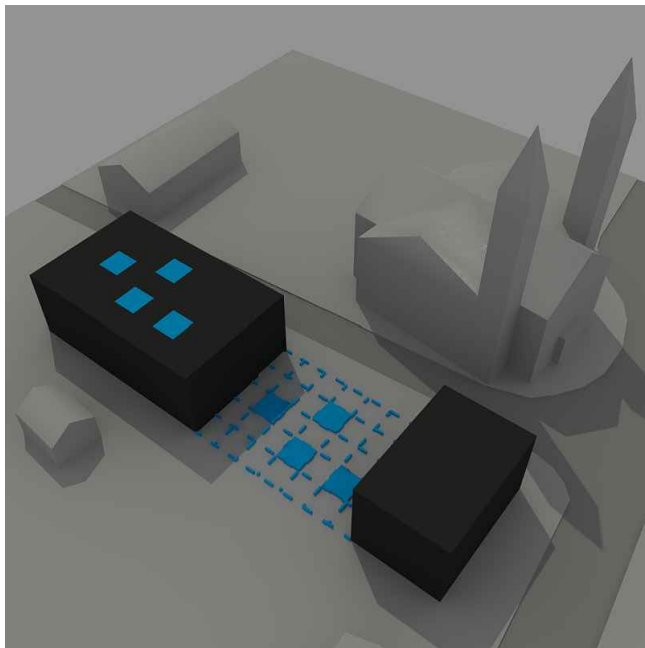
description  
an art gallery  
next to trnovo  
church

program  
exhibition

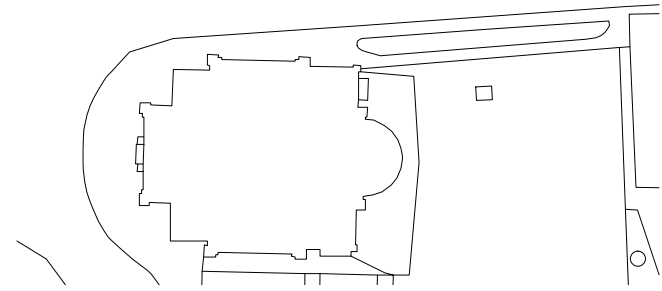
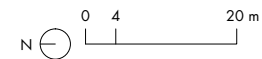
location trnovo,  
ljubljana,  
slovenia

year  
2007

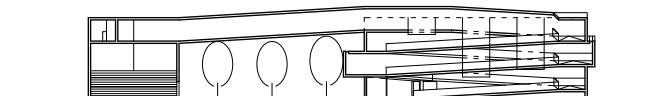
mentor  
prof. vojteh  
ravnikar



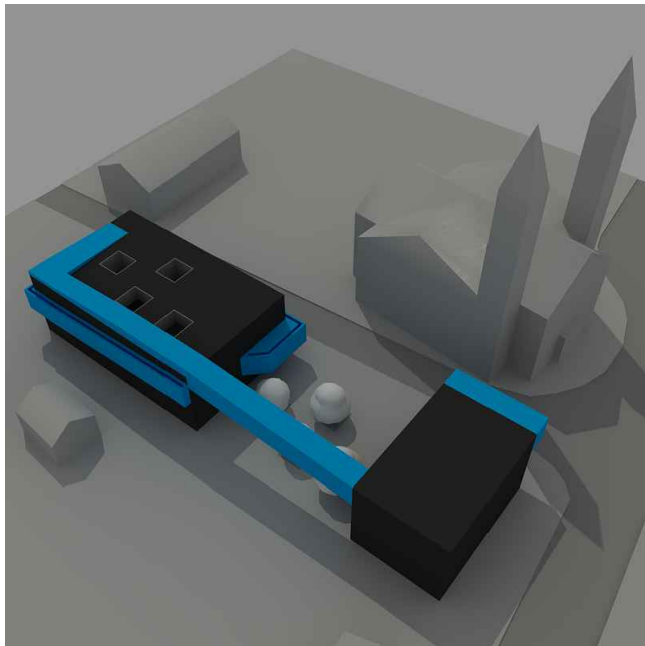
ground floor plan S 1:1000

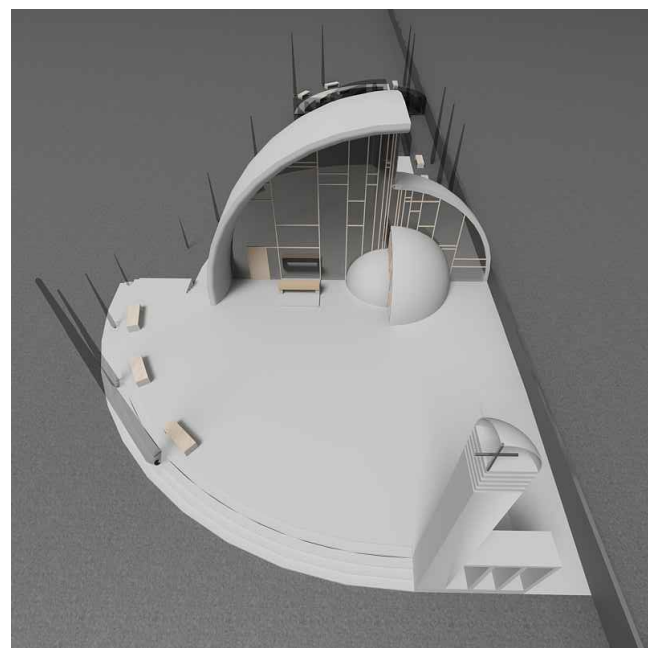
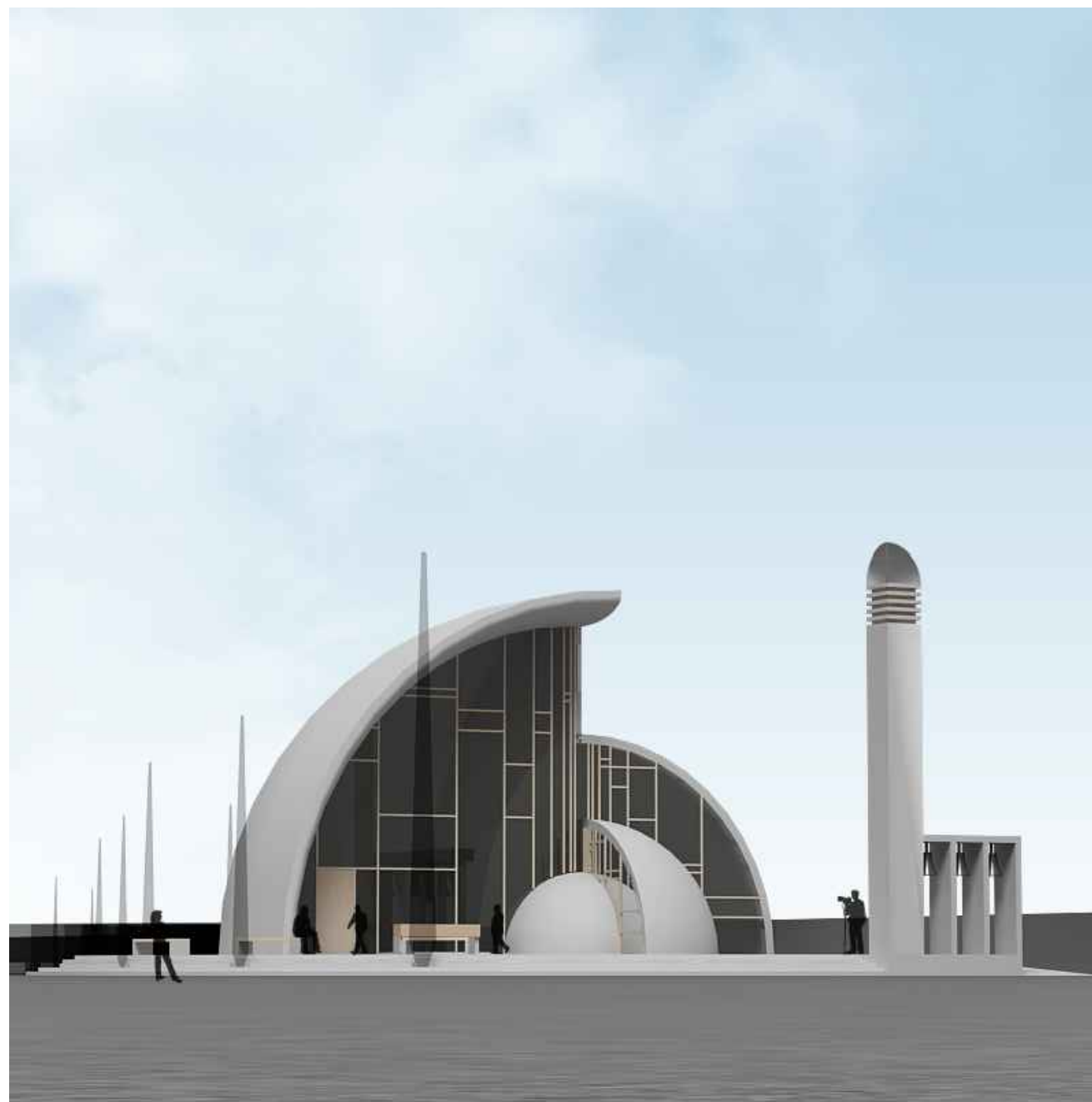
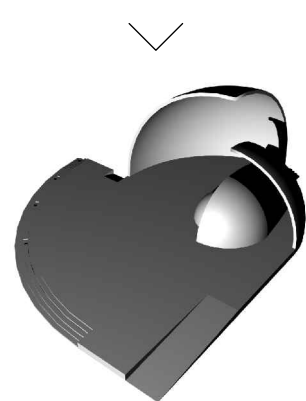
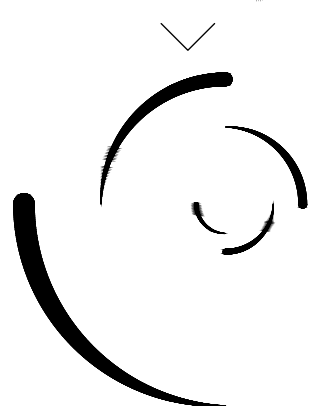
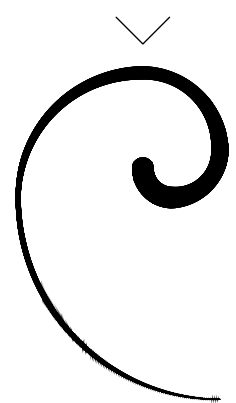
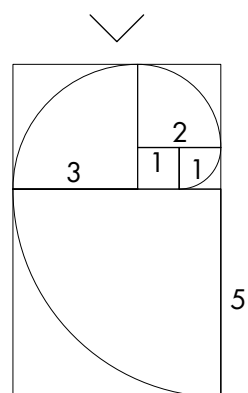


section S 1:1000

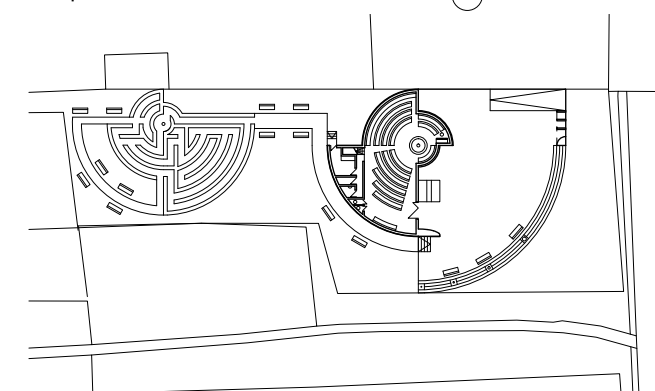
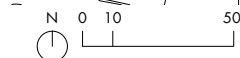


facade S 1:1000

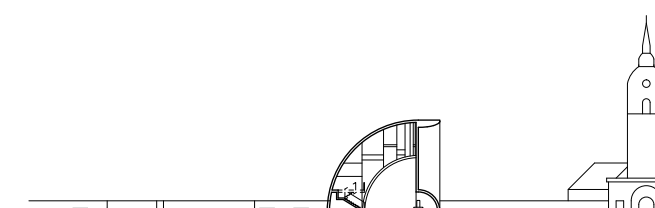
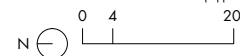




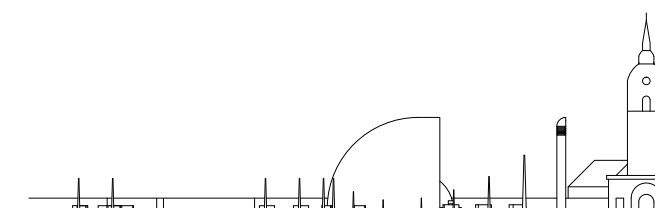
site plan S 1:2500



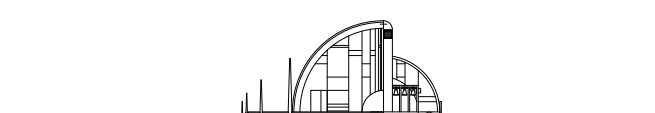
ground floor plan S 1:1000



section S 1:1000



side facade S 1:1000



front facade S 1:1000

P O R T  
F O L I O

N E W  
C H U R C H

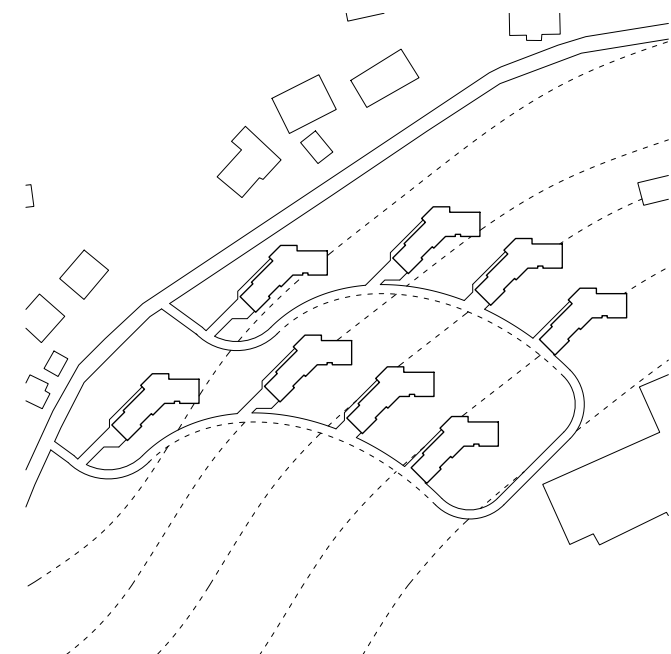
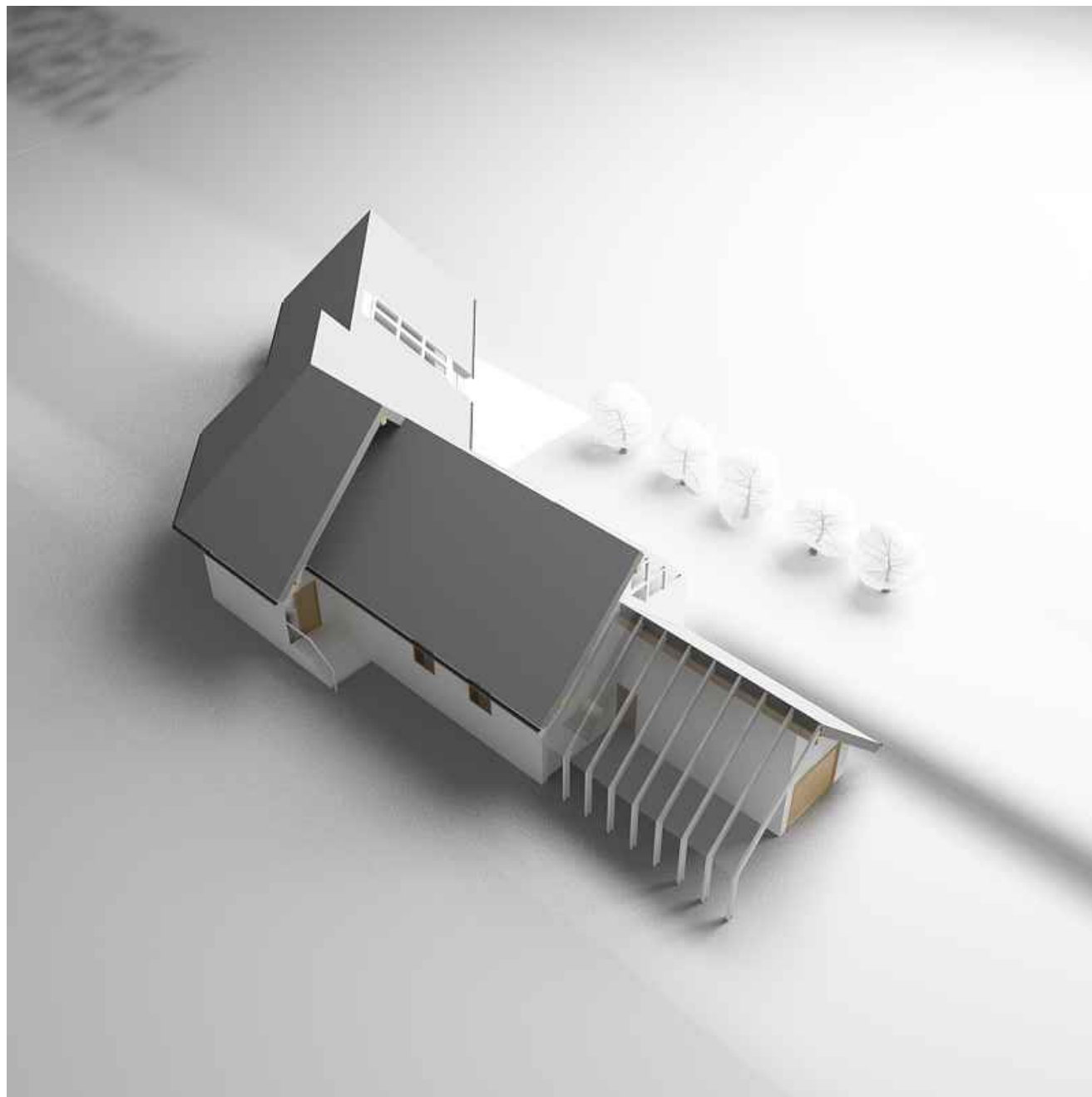
**description**  
new church  
next to an old  
one

**program**  
religious

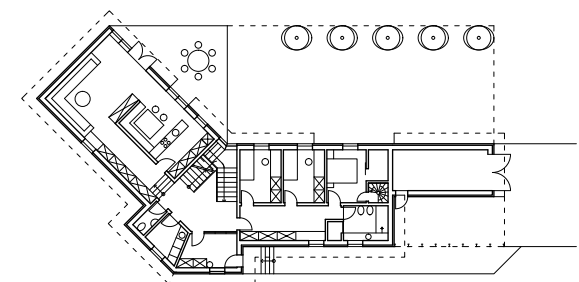
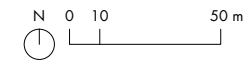
**location**  
štepanja vas,  
ljubljana,  
slovenia

**year**  
2007

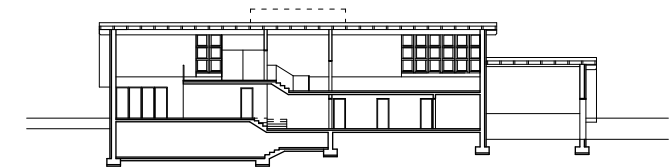
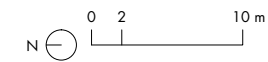
**mentor**  
prof. vojteh  
ravnikar



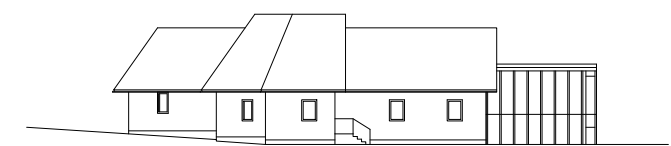
site plan S 1:2500



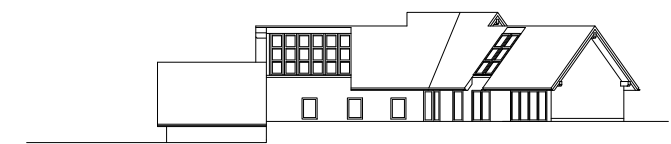
ground floor plan S 1:500



section S 1:500



northwest facade S 1:500



southeast facade S 1:500

P O R T  
F O L I O

FAMILY  
HOUSES  
HAMLET

**description**  
a hamlet of  
family houses  
attached to a  
rural village

**program**  
residential

**location** ribnica  
na pohorju,  
slovenia

**year**  
2008

**mentor**  
prof. jože  
marinko

T R A I N  
+ B U S  
S T A T I O N

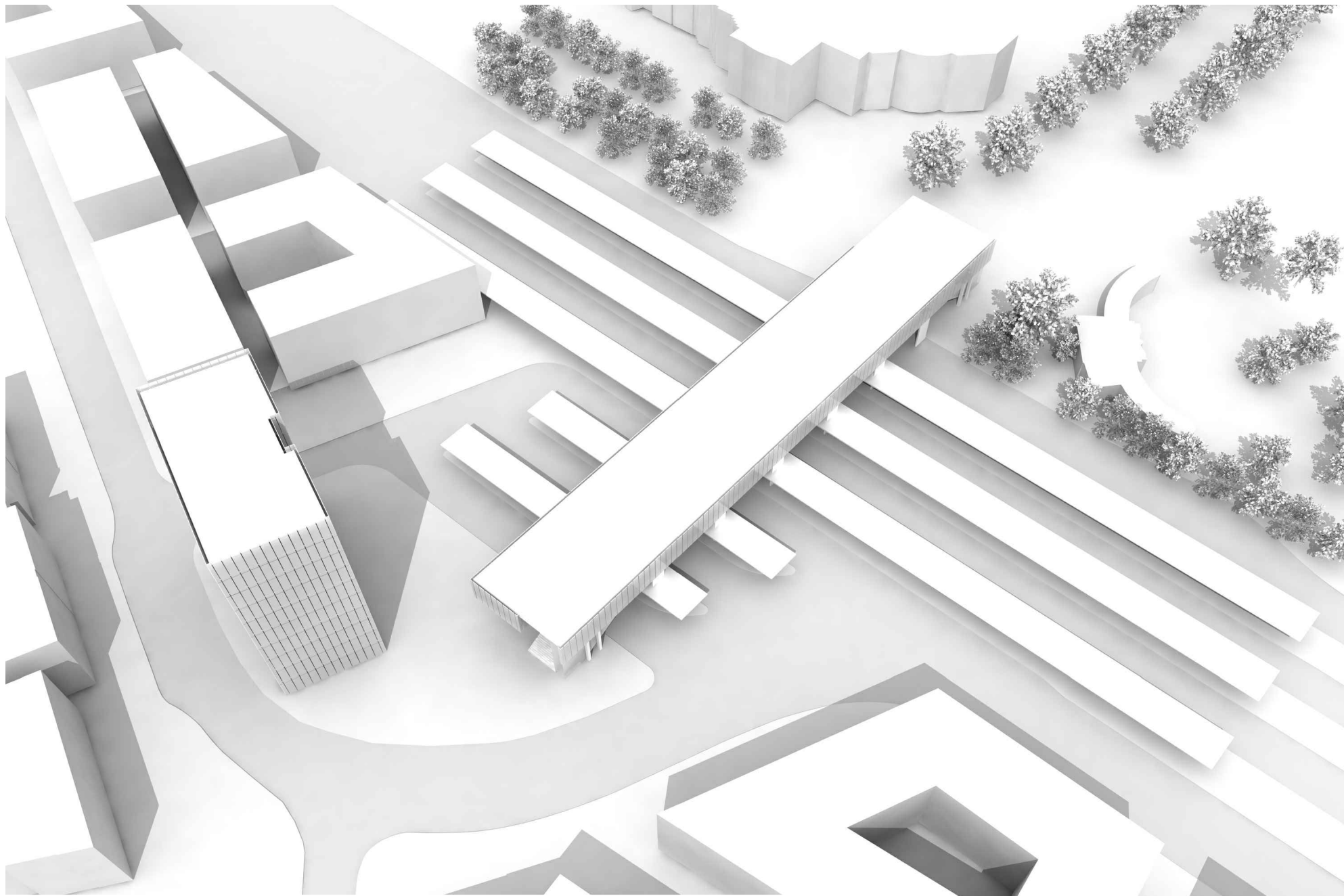
**description**  
a combination  
of train and bus  
station as a  
connection from  
the city to the  
bodensee lake

**program**  
traffic

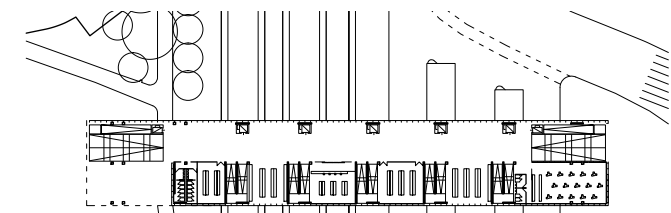
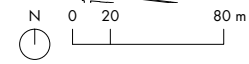
**location**  
bregenz,  
vorarlberg,  
austria

**year**  
2010

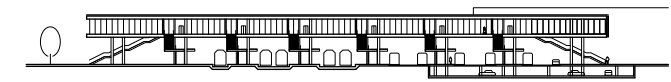
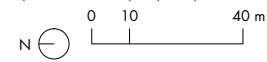
**mentor**  
prof. hermann  
kaufmann



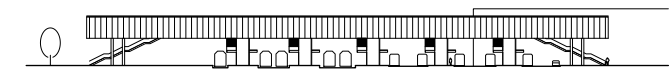
site plan S 1:4000



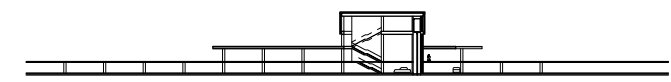
floor plan S 1:2000



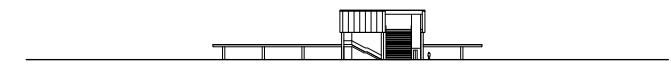
side section S 1:2000



side elevation S 1:200

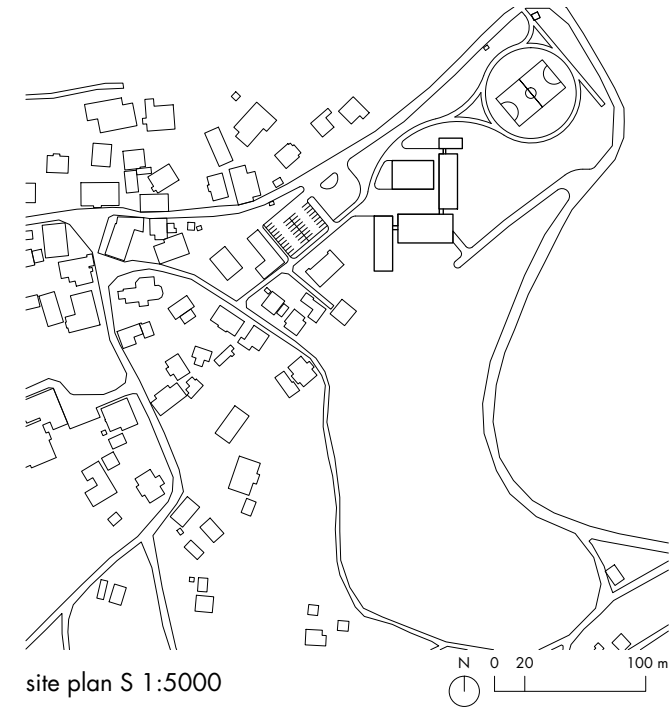


cross section S 1:2000



front elevation S 1:2000





P O R T  
F O L I O

SCHOOL  
+KINDER  
GARTEN

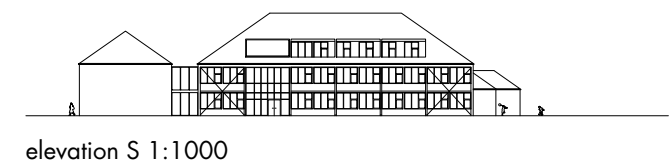
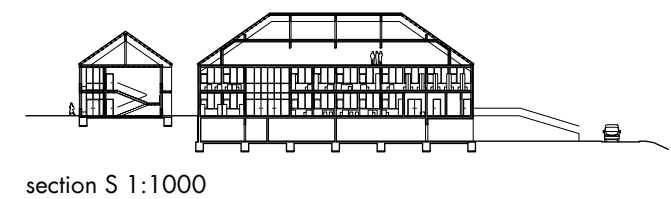
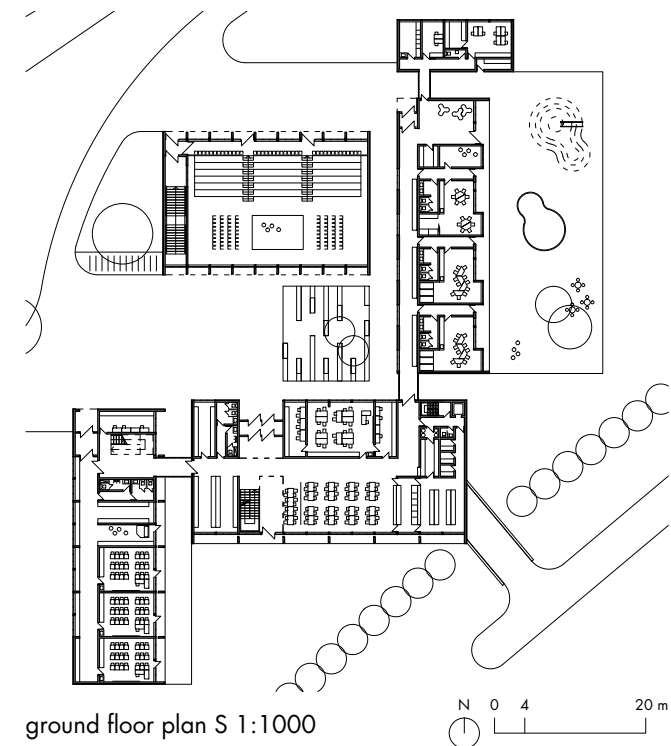
**description**  
new school and  
kindergarten in  
a rural village

**program**  
education

**location** ribnica  
na pohorju,  
slovenia

**year**  
2011

**mentor**  
prof. živa deu

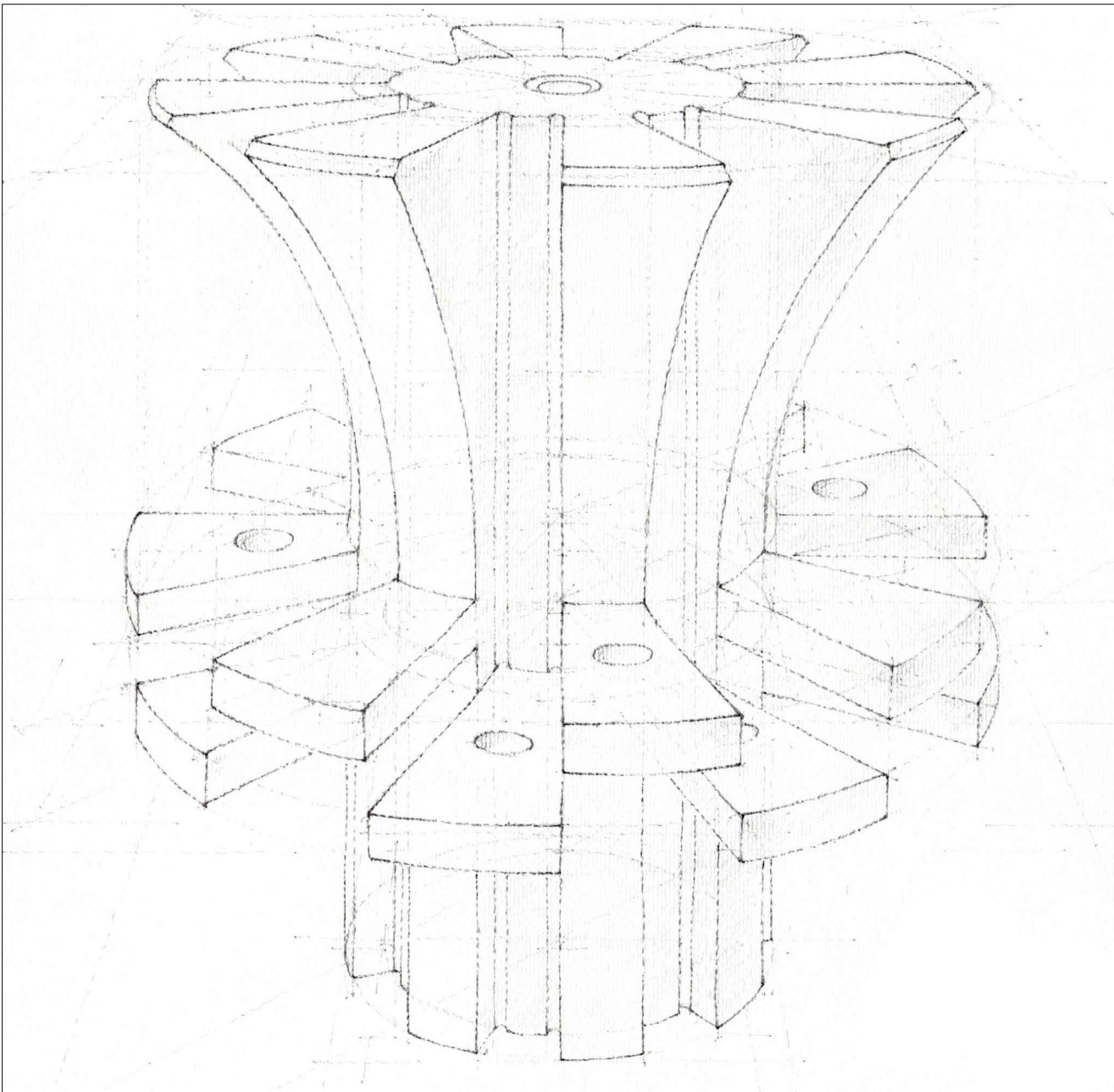




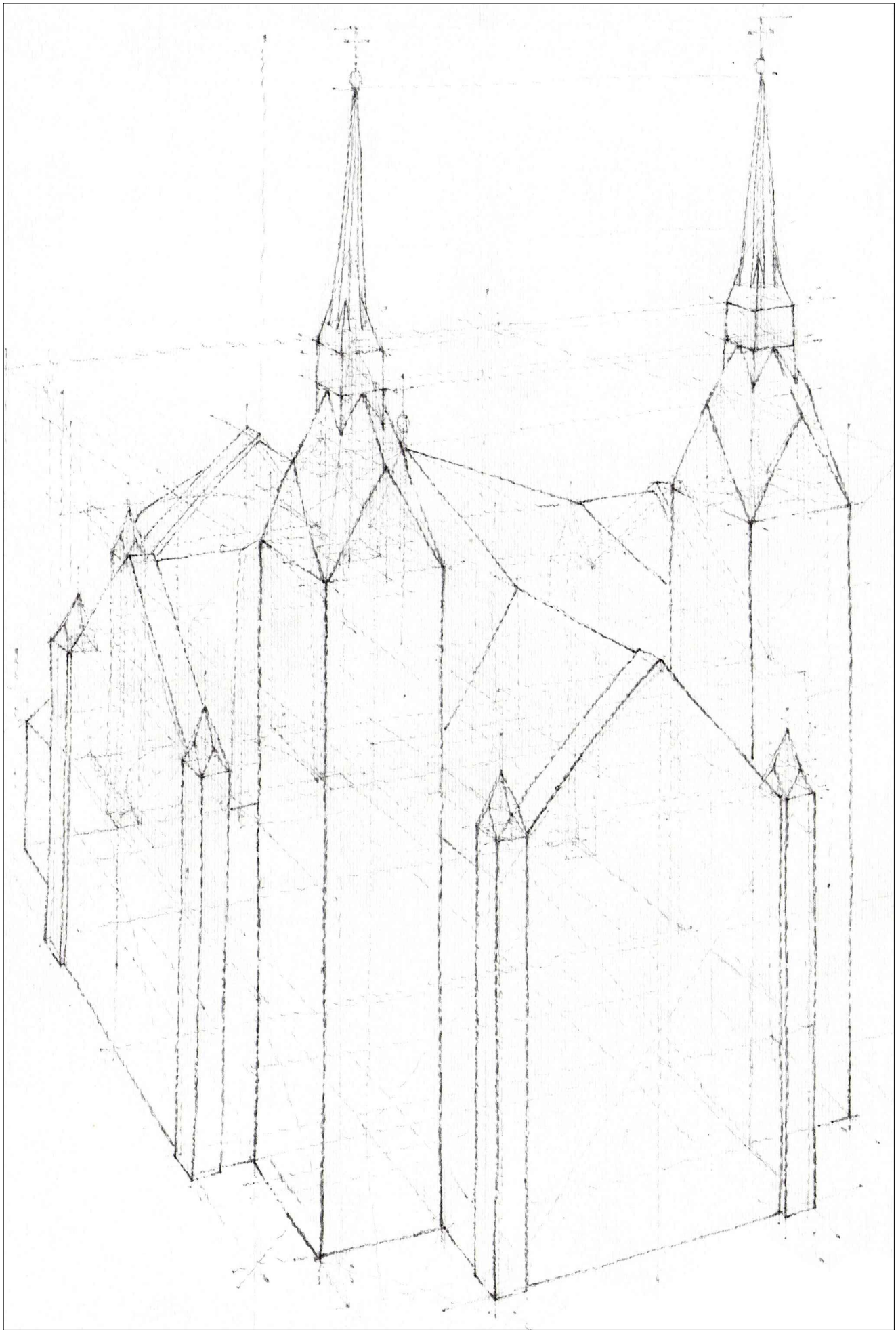
description  
freehand  
drawings of  
various objects,  
drawn either  
from memory  
or from  
observation

year  
2005 - 2006

mentor  
prof. janez  
suhadolc



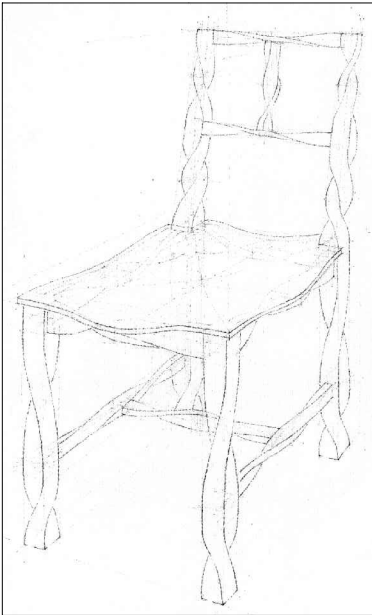
transformation of a part of a drive shaft



church in trnovo, ljubljana, slovenia



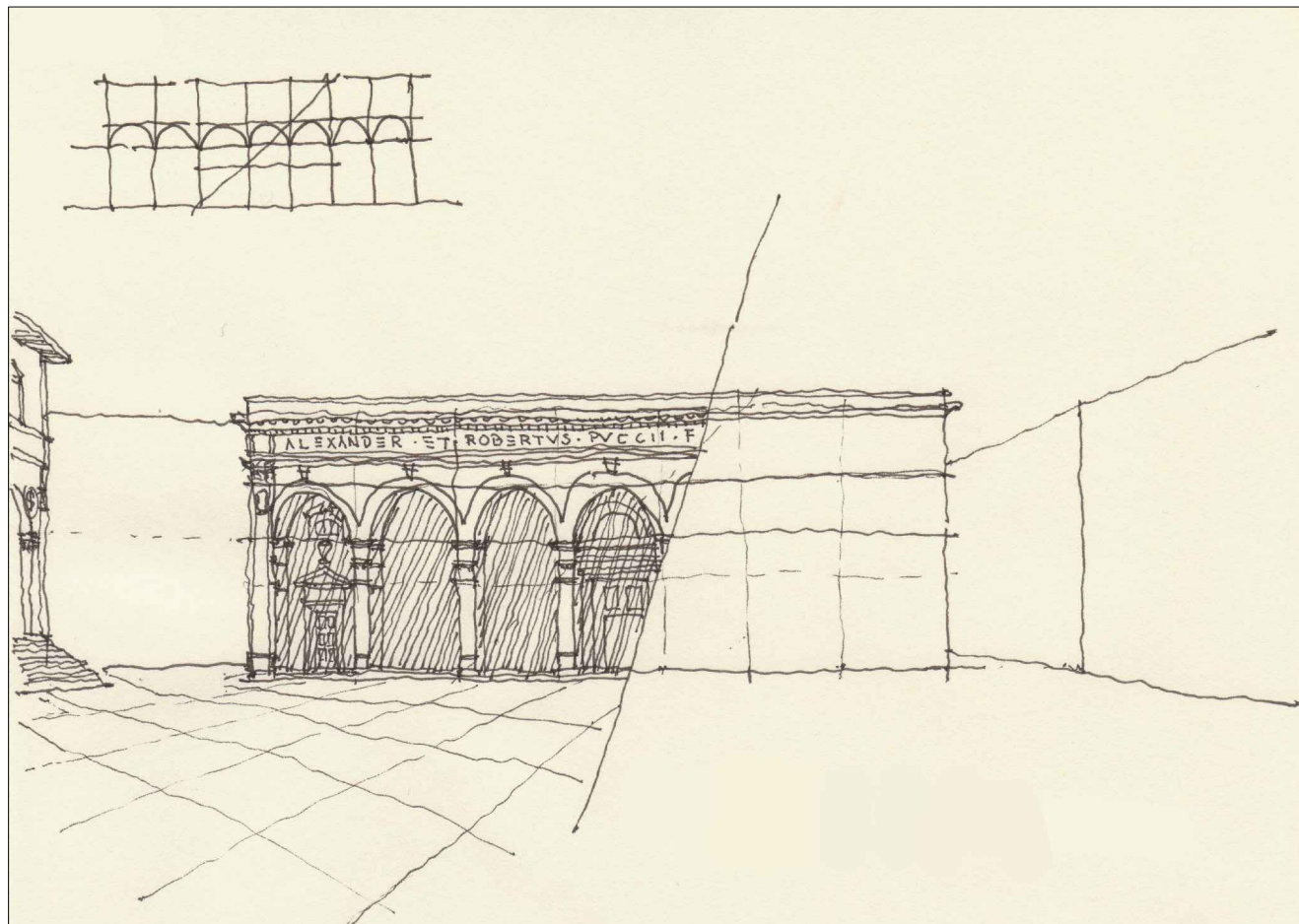
composition of plečnik chairs



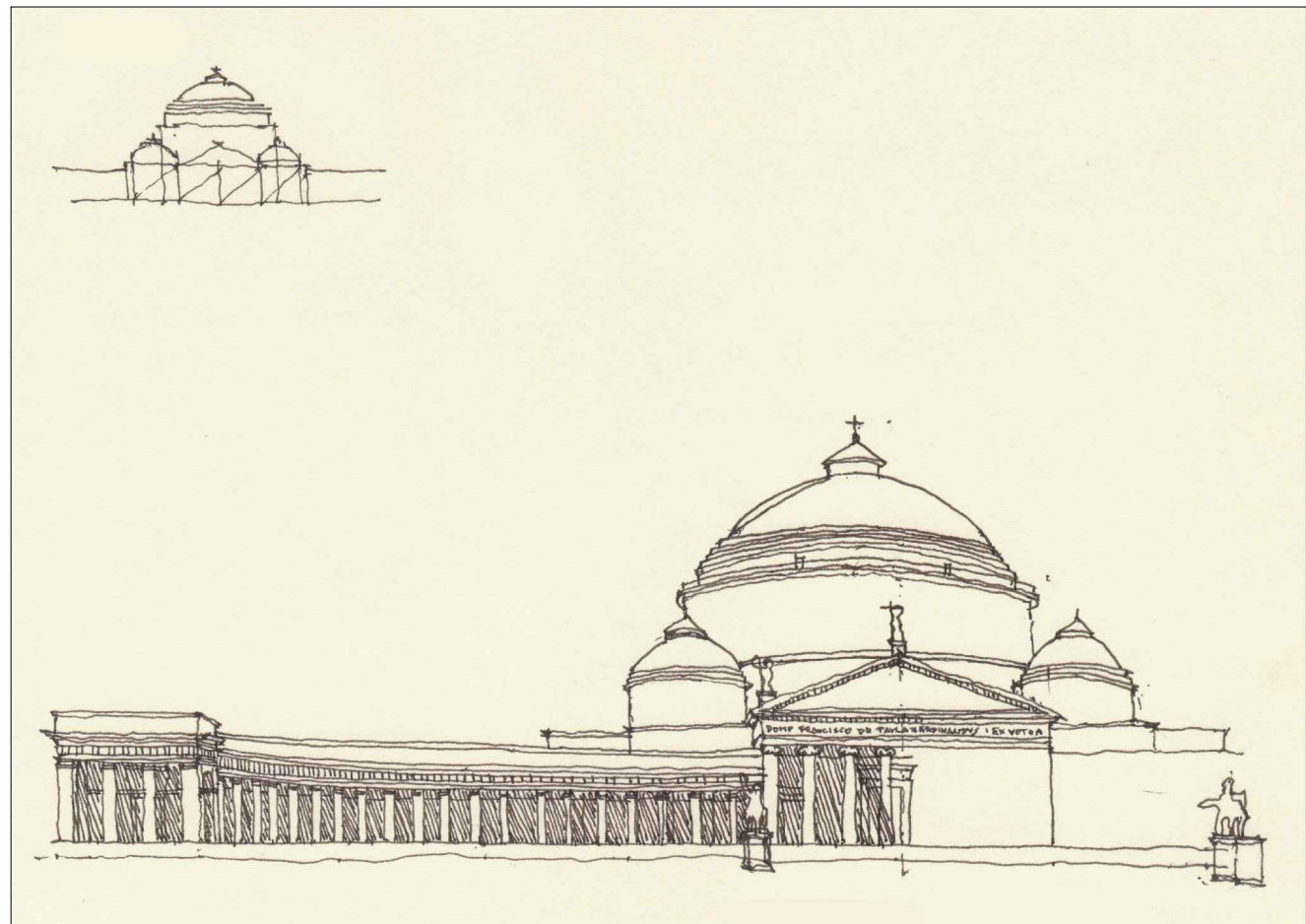
transformation of the plečnik chair

description  
freehand  
sketches made  
while travelling

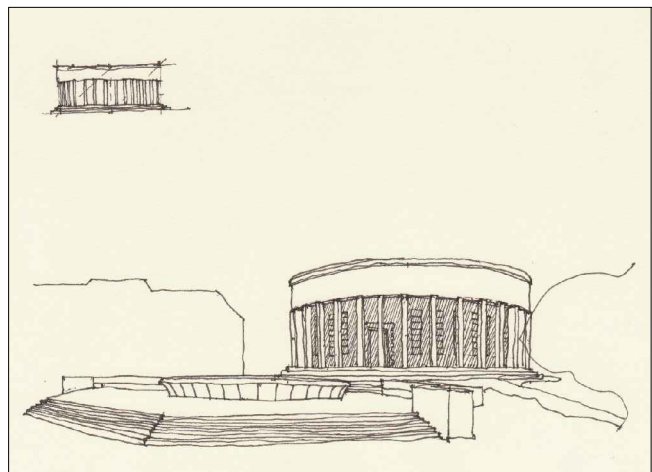
year  
2012



piazza della santissima annunziata, firenze, italy



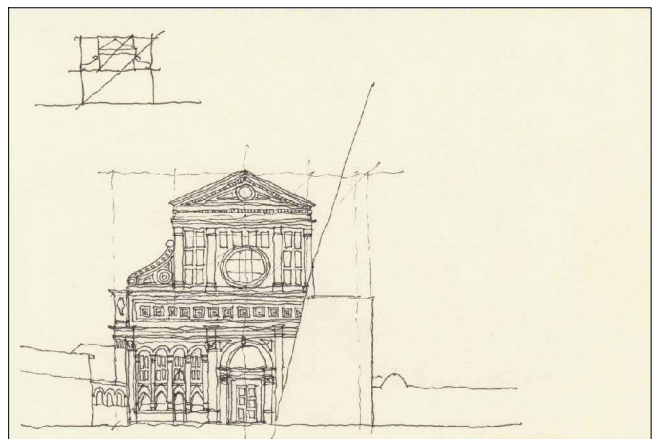
san francesco di paola, napoli, italy



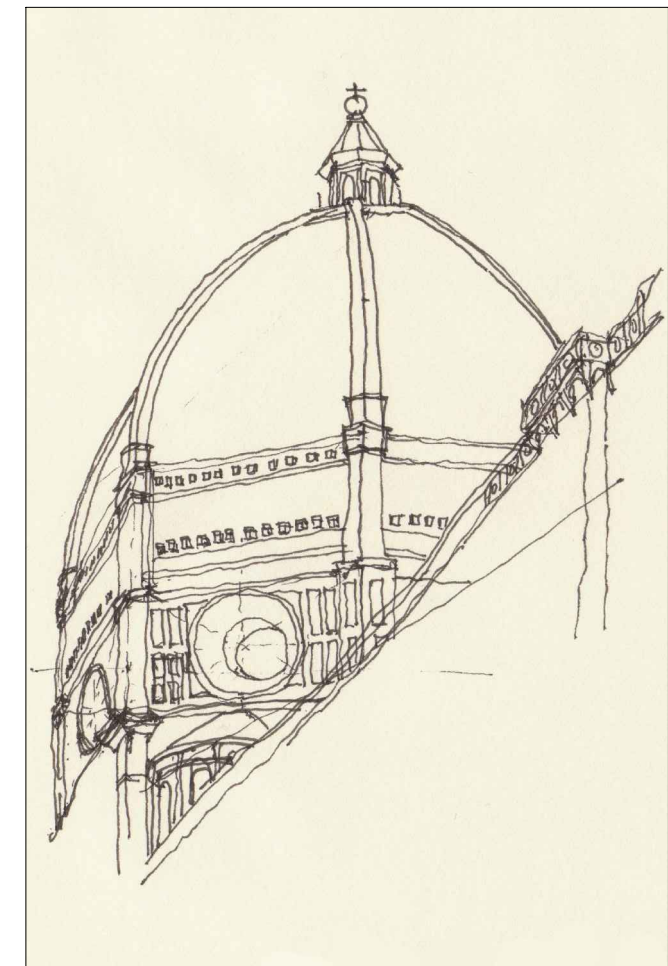
meštrović pavillion, zagreb, croatia



the white tower, thessaloniki, greece



santa maria novella, firenze, italy



cupola del brunelleschi, firenze, italy

